

# SPREADER CONTROL VALVE – Flow Sharing

- Up to 250 bar (3626 psi)
- Inlet flow 110 l/min (30 gpm)
- Threaded connections:
  - ISO 1179 (BSPP/Gas)
  - ISO 11926 (UNF)
- Weight : 23 kg (50.7 lbs)
- Material: Cast iron and Steel
- Surface treatment: Phosphating
- LS Control



*Specifications are subject to change without notice.*

## DESCRIPTION

The spreader control valve manages the regulation of the conveyor floor function and the back hood opening. It can be used with LS pump.

Application:

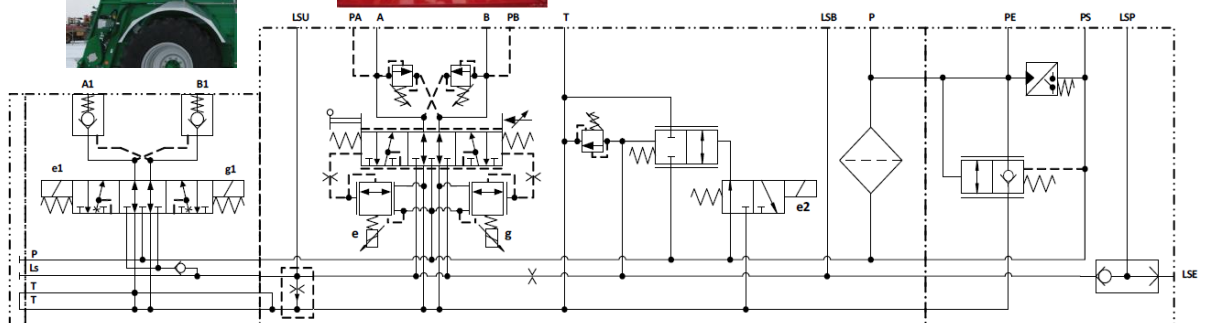


## HYDRAULIC SCHEMATIC

Hydraulic back gate

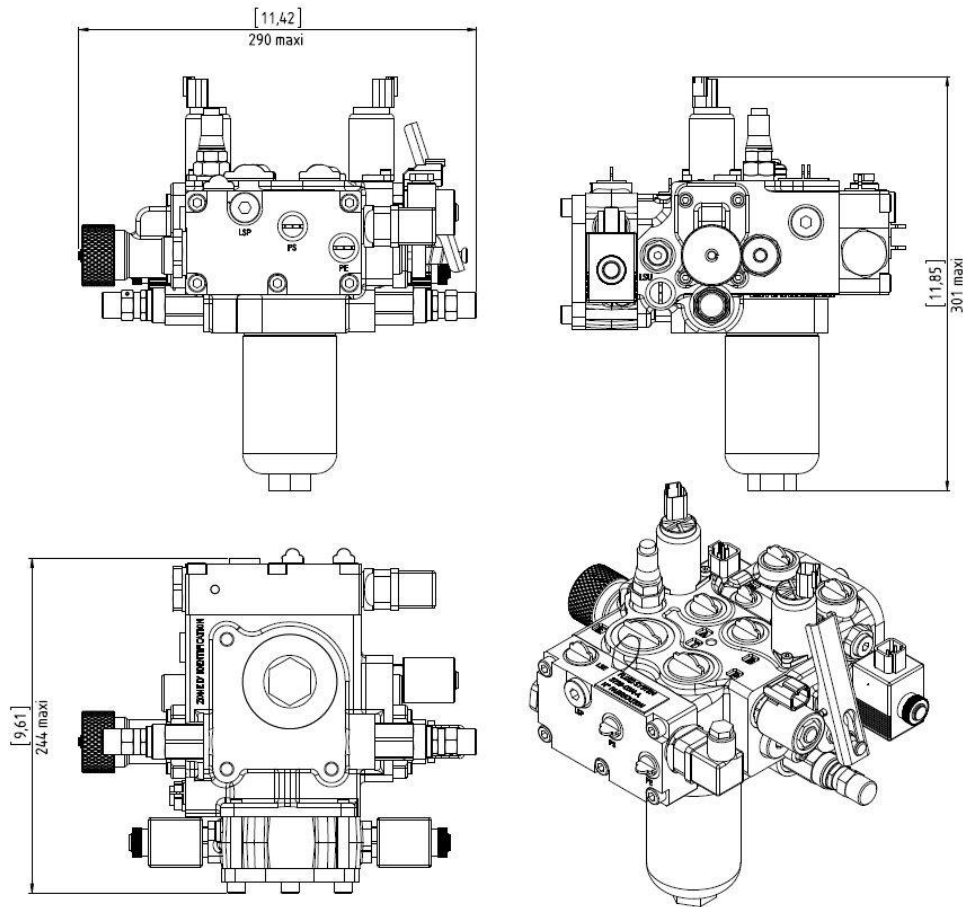


Chain floor



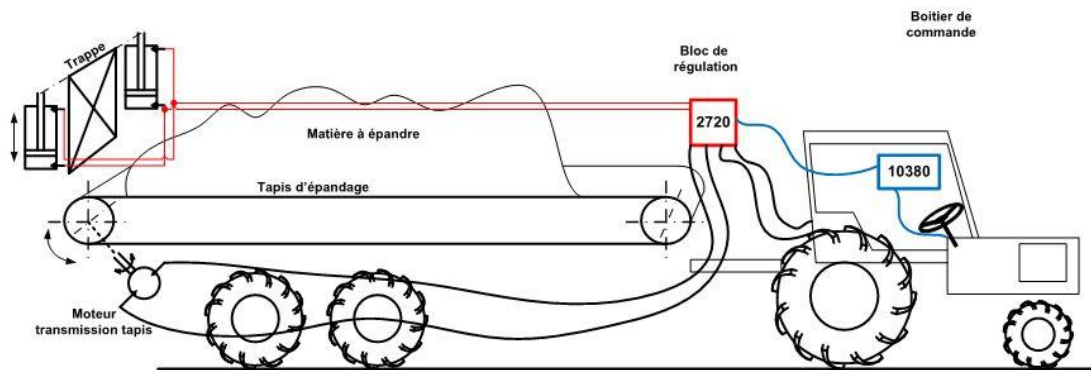
▷ **OVERALL DIMENSIONS**

Millimeter (inches)



▷ **INSTALLATION**

**Remorque d'épandage**



For more details, please contact us to [export@fluid-system.com](mailto:export@fluid-system.com)