

# SELECTOR HP 3/2 - CALIBER 20

- Up to 450 bar  
(6525 psi)
- Up to 120 l/min  
(32 gpm)
- Threaded connections:
  - ISO 1179 (BSPP/Gas)
  - ISO 11926 (UNF)
- Surface treatment:  
Phosphating



*Specifications are subject to change without notice.*

## ▷ DESCRIPTION

The selector valve, also called directional control valve, is part of the energy transmission chain used to direct the pressurized flow.

It consists of a spool sliding in a cast body to enable communication between outlets. The spool is hydraulically controlled.

## ▷ APPLICATION

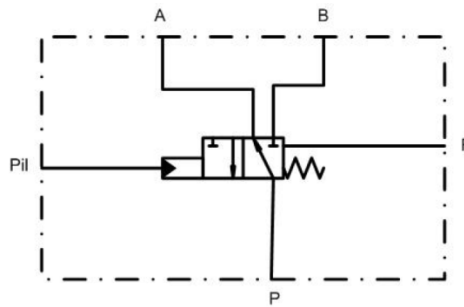
### Forestry Vehicles

Machine equipped with two transmissions, one hydrostatic for the movement of the machine and another for the tooling operation control (clearing saw, hoist, etc...).

The system equipped with a selector valve requires only one pump to feed:

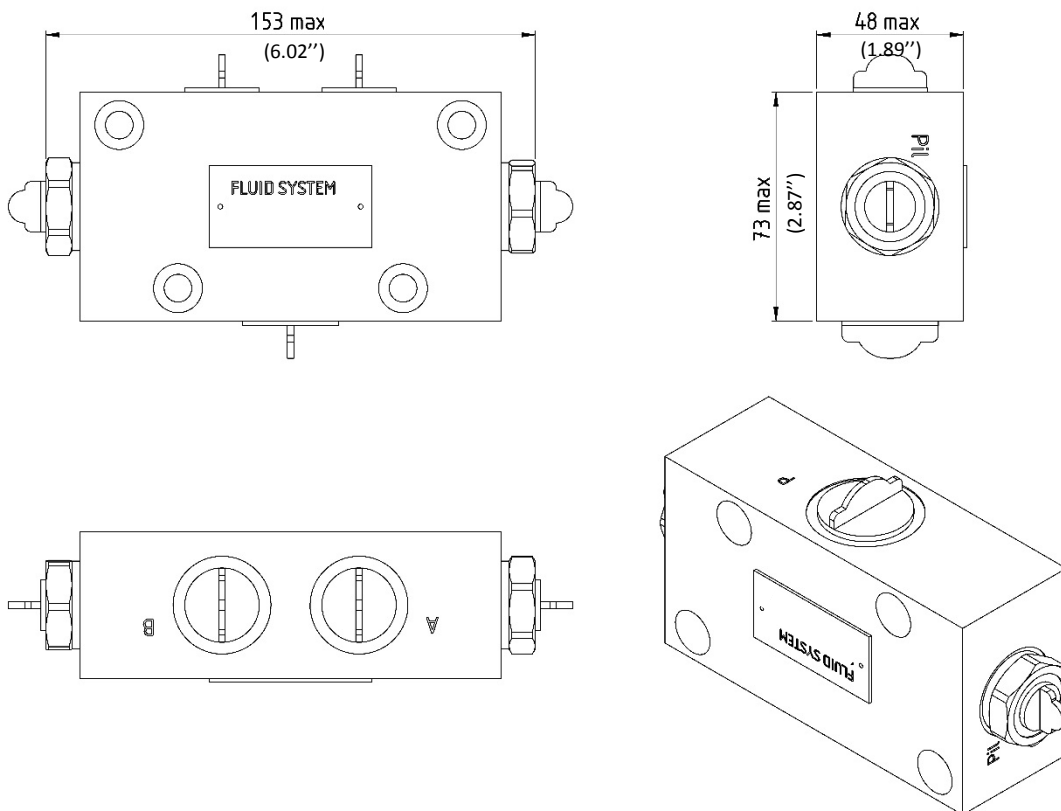
- 1- The back drive
- 2- The front drive
- 3- The two at the same time

▷ HYDRAULIC SCHEMATIC



▷ OVERALL DIMENSIONS

Millimeter (inches)



▷ TECHNICAL SPECIFICATIONS

Maximum flow	120 l/min (32 gpm)
Operating pressure	450 bar (6525 psi)
Piloting pressure	Min 8 bar (116 psi) - Max 50 bar (725 psi) *
Maximum pressure	500 bar (7255 psi)
Temperature	- 20°C to 80°C (32°F to 176°F)
Seals	NBR **
Ports / Thread	ISO 1179 (BSP/Gas) - ISO 11926 (UNF)
Weight	2.8 kg (6.2 lbs)
Material	Steel
Viscosity	Between 10 and 100 cSt
Pollution level	20/18/15 as per ISO 4406
Surface treatment	Phosphatation

\* Values can be changed upon request to our engineering department.

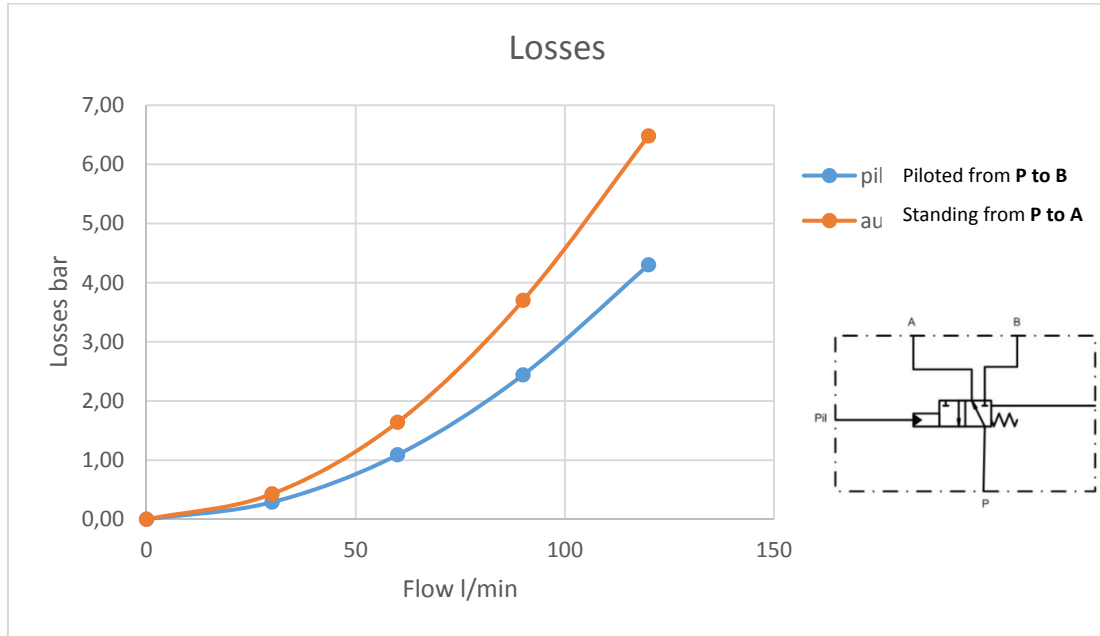
\*\* Other seals available on demand.

▷ PORT TABLE

PORT	European Norm ISO 1179-1	US Norm ISO 11926-1	Protective Cap
P	3/4" BSP	1 1/16"-12 UNF-2B	Plastic
A, B	1/2" BSP	7/8"-14 UNF-2B	Plastic
F, Pil	1/4" BSP	1/2"-20 UNF-2B	Plastic

▷ SPECIFICATION CURVES

Loss



▷ PRODUCT CODE

